

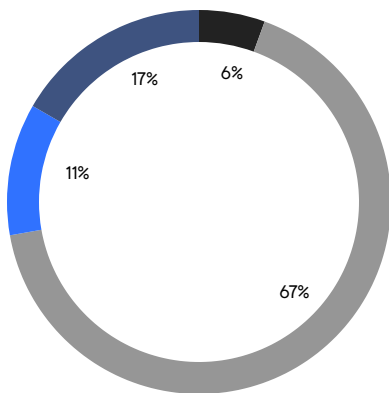
# QUEENS WEEKLY LUXURY REPORT



5 CENTER DRIVE

RESIDENTIAL CONTRACTS  
\$1.25 MILLION AND UP

- THE ROCKAWAYS
- NORTHEASTERN QUEENS
- CENTRAL QUEENS
- NORTHWESTERN QUEENS



18

CONTRACTS SIGNED  
THIS WEEK

\$31,223,997

TOTAL CONTRACT VOLUME

The Queens luxury real estate market, defined as all properties priced \$1.25M and above, saw 18 contracts signed this week, made up of 2 condos, and 16 houses. The previous week saw 8 deals. For more information or data, please reach out to a Compass agent.

**\$1,734,667**

AVERAGE ASKING PRICE

**\$1,412,499**

MEDIAN ASKING PRICE

**\$811**

AVERAGE PPSF

**4%**

AVERAGE DISCOUNT

**\$31,223,997**

TOTAL VOLUME

**158**

AVERAGE DAYS ON MARKET

125 Beach 135th Street in Belle Harbor entered contract this week, with a last asking price of \$3,995,000. This turn-key townhouse spans 2,716 square feet with 3 beds and 3 full baths. It features an all-glass kitchen with panoramic water views, a full basement, a gated garage and entry area, an Olympic-sized swimming pool and outdoor kitchen, high-end fixtures and furnishings, hardwood floors, and much more.

Also signed this week was 172-05 35th Avenue in Flushing, with a last asking price of \$2,480,000. This spacious single-family house spans 6,650 square feet with 6 beds and 3 full baths. It features multiple skylights, a large family room, granite counter tops, a backyard with fish pond, high ceilings, stainless steel appliances, abundant parking, and much more.

**2**

CONDO DEAL(S)

**0**

CO-OP DEAL(S)

**16**

TOWNHOUSE DEAL(S)

**\$1,537,500**

AVERAGE ASKING PRICE

**\$0**

AVERAGE ASKING PRICE

**\$1,759,313**

AVERAGE ASKING PRICE

**\$1,537,500**

MEDIAN ASKING PRICE

**\$0**

MEDIAN ASKING PRICE

**\$1,412,499**

MEDIAN ASKING PRICE

**\$1,360**

AVERAGE PPSF

**\$737**

AVERAGE PPSF

**1,114**

AVERAGE SQFT

**2,674**

AVERAGE SQFT



### 125 BEACH 135TH ST

Belle Harbor

TYPE	TOWNHOUSE	STATUS	CONTRACT	ASK	\$3,995,000	INITIAL	\$6,200,000
SQFT	2,716	PPSF	\$1,471	BEDS	3	BATHS	2.5
FEES	\$1,340	DOM	237				



### 172-03 35TH AVE

Flushing

TYPE	TOWNHOUSE	STATUS	CONTRACT	ASK	\$2,480,000	INITIAL	\$2,900,000
SQFT	6,650	PPSF	\$373	BEDS	6	BATHS	3.5
FEES	\$1,432	DOM	1,205				



### 57-34 159TH ST

Queensboro Hill

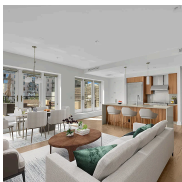
TYPE	TOWNHOUSE	STATUS	CONTRACT	ASK	\$2,480,000	INITIAL	\$2,480,000
SQFT	2,740	PPSF	\$905	BEDS	7	BATHS	5.5
FEES	\$1,183	DOM	338				



### 110-30 69TH ROAD

Forest Hills

TYPE	TOWNHOUSE	STATUS	CONTRACT	ASK	\$2,350,000	INITIAL	\$2,350,000
SQFT	3,590	PPSF	\$655	BEDS	6	BATHS	5
FEES	\$684	DOM	129				



### 5-27 51ST AVE #PHC

Long Island City

TYPE	CONDO	STATUS	CONTRACT	ASK	\$1,800,000	INITIAL	\$1,800,000
SQFT	1,180	PPSF	\$1,526	BEDS	2	BATHS	2
FEES	\$1,490	DOM	19				



### 67-39 164TH ST

Fresh Meadows

TYPE	TOWNHOUSE	STATUS	CONTRACT	ASK	\$1,798,000	INITIAL	\$1,988,000
SQFT	1,304	PPSF	\$1,379	BEDS	3	BATHS	4
FEES	\$859	DOM	144				

Compass is a licensed real estate broker and abides by Equal Housing Opportunity laws. All material presented herein is intended for informational purposes only. Information is compiled from sources deemed reliable but is subject to errors, omissions, changes in price, condition, sale, or withdrawal without notice. No statement is made as to the accuracy of any description. All measurements and square footages are approximate. This is not intended to solicit property already listed. Nothing herein shall be construed as legal, accounting or other professional advice outside the realm of real estate brokerage.



### 76-44 267TH ST

Glen Oaks

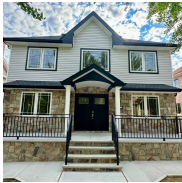
TYPE	TOWNHOUSE	STATUS	CONTRACT	ASK	\$1,688,000	INITIAL	\$1,688,000
SQFT	2,800	PPSF	\$603	BEDS	4	BATHS	2
FEES	\$959	DOM	21				



### 72-44 141ST ST

Kew Gardens Hills

TYPE	TOWNHOUSE	STATUS	CONTRACT	ASK	\$1,475,000	INITIAL	\$1,525,000
SQFT	4,000	PPSF	\$369	BEDS	3	BATHS	2.5
FEES	\$10,114	DOM	67				



### 77-17 263RD ST

Floral Park

TYPE	TOWNHOUSE	STATUS	CONTRACT	ASK	\$1,425,000	INITIAL	\$1,525,000
SQFT	2,300	PPSF	\$620	BEDS	5	BATHS	5
FEES	\$566	DOM	76				



### 97-12 23RD AVE

Elmhurst

TYPE	TOWNHOUSE	STATUS	CONTRACT	ASK	\$1,399,997	INITIAL	\$1,399,999
SQFT	2,808	PPSF	\$499	BEDS	4	BATHS	3
FEES	\$669	DOM	68				



### 36-42 204TH ST

Auburndale

TYPE	TOWNHOUSE	STATUS	CONTRACT	ASK	\$1,398,000	INITIAL	\$1,498,000
SQFT	1,900	PPSF	\$736	BEDS	3	BATHS	3.5
FEES	\$911	DOM	94				



### 38-14 218TH ST

Bayside

TYPE	TOWNHOUSE	STATUS	CONTRACT	ASK	\$1,327,000	INITIAL	\$1,350,000
SQFT	N/A	PPSF	N/A	BEDS	3	BATHS	1
FEES	\$773	DOM	134				

Compass is a licensed real estate broker and abides by Equal Housing Opportunity laws. All material presented herein is intended for informational purposes only. Information is compiled from sources deemed reliable but is subject to errors, omissions, changes in price, condition, sale, or withdrawal without notice. No statement is made as to the accuracy of any description. All measurements and square footages are approximate. This is not intended to solicit property already listed. Nothing herein shall be construed as legal, accounting or other professional advice outside the realm of real estate brokerage.

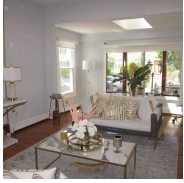




### 230-14 53RD AVE

Bayside

TYPE	TOWNHOUSE	STATUS	CONTRACT	ASK	\$1,288,000	INITIAL	\$1,288,000
SQFT	2,156	PPSF	\$597	BEDS	3	BATHS	2.5
FEES	\$879	DOM	19				



### 36-11 214TH PL

Bayside

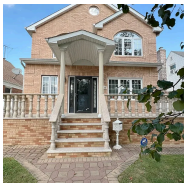
TYPE	TOWNHOUSE	STATUS	CONTRACT	ASK	\$1,279,000	INITIAL	\$1,379,000
SQFT	1,722	PPSF	\$743	BEDS	4	BATHS	2.5
FEES	\$588	DOM	116				



### 5-20 51ST AVE #2

Long Island City

TYPE	CONDO	STATUS	CONTRACT	ASK	\$1,275,000	INITIAL	\$1,275,000
SQFT	1,047	PPSF	\$1,194	BEDS	2	BATHS	2
FEES	\$1,702	DOM	50				



### 83-49 250TH ST

Bellerose

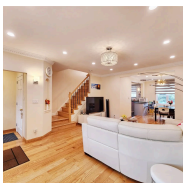
TYPE	TOWNHOUSE	STATUS	CONTRACT	ASK	\$1,258,000	INITIAL	\$1,258,000
SQFT	2,000	PPSF	\$629	BEDS	4	BATHS	2.5
FEES	N/A	DOM	37				



### 170-20 65TH AVE

Flushing Heights

TYPE	TOWNHOUSE	STATUS	CONTRACT	ASK	\$1,258,000	INITIAL	\$1,258,000
SQFT	1,600	PPSF	\$786	BEDS	4	BATHS	4
FEES	\$850	DOM	33				



### 48-26 38TH ST

Sunnyside

TYPE	TOWNHOUSE	STATUS	CONTRACT	ASK	\$1,250,000	INITIAL	\$1,250,000
SQFT	1,812	PPSF	\$690	BEDS	3	BATHS	1.5
FEES	\$536	DOM	48				

Compass is a licensed real estate broker and abides by Equal Housing Opportunity laws. All material presented herein is intended for informational purposes only. Information is compiled from sources deemed reliable but is subject to errors, omissions, changes in price, condition, sale, or withdrawal without notice. No statement is made as to the accuracy of any description. All measurements and square footages are approximate. This is not intended to solicit property already listed. Nothing herein shall be construed as legal, accounting or other professional advice outside the realm of real estate brokerage.